

## 18 PC. BRAKE CALIPER SOCKET SET

**W86025**

Inner: 1 Master: 10 Packaging: Color Box

- Specialty brake caliper bits and sockets needed to service today's Domestic, Euro and Asian vehicles
- Complete coverage for most brake caliper applications in one convenient set
- Heat treated chrome vanadium, and chrome molly construction
- Drive sizes: 1/4 in., 3/8 in., and 1/2 in.



5 Point sockets: 10mm, 12.5mm, 14mm, 19mm 5 Point male bit socket: 10mm. 7 Point sockets: 14mm, 22mm. 10 Point sockets: 11.5mm, 15mm, 20mm. 6 Point male bit socket: 7mm stubby, 7mm std, 7mm extra-long, 8mm stubby, 6 Point male bit socket: 9mm stubby, 9mm extra-long, 11mm extra-long. 12 Point Tamper-Proof bit socket: 14mm.

## UNIVERSAL BRAKE PAD SPREADER

**W80109**

Inner: 6 Master: 24 Packaging: Clamshell

- Used to compress single, twin and quad disc brake pistons on fixed and floating calipers
- Slide your 3/4" ratcheting box end wrench on as a handle or any 3/4" or adjustable wrench
- 360 degree access to the threaded hex spreader for better use in narrow space
- Evenly spreads force on the pistons to prevent misalignment and prevent damage to brake components
- Compact for easy access when in difficult caliper angles

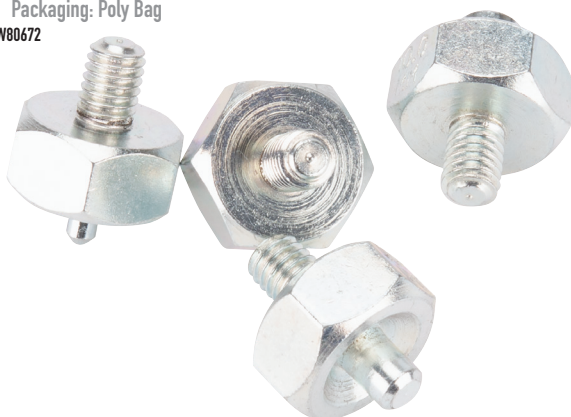


## DIES SET FOR W80672 ISO BUBBLE

**W80685**

Inner: 50 Master: 200 Packaging: Poly Bag

- 4pc Replacement Dies for W80672
- Size: 4.75, 6, 8, 10mm



## BRAKE FLUID & TIRE PRESSURE

**W183**

Inner: 10 Master: 100 Packaging: Carded

- Unique 2 in 1 tool combines automotive brake fluid tester and tire gauge to check the pressure
- Displays your digital tire pressure on an easy-to-read backlit LCD screen
- Check brake fluid quality, providing the percentage of water in the braking system
- Accurately test DOT 3, DOT 4, and DOT 5.1 brake fluid
- Durable light weight plastic, with an LCD screen and three LED indicators, accurate +/- 1 percent
- -Pressure range: 3-150-psi. -Brake Fluid LED: Good, OK, Bad -Measurement Units: psi, kPa, bar, kg/cm -Battery: 2ea. 1.5V(lr44)



## SLACK ADJUSTING TOOL SET

**W80101**

Inner: 6 Master: 48 Packaging: Carded

- Offset 5/16 in. ratcheting wrench used to make corrections to the automatic slack adjuster
- Set includes double square reversible ratchet wrench and tensioner button release tool
- For adjusting automatic slack adjusters on Meritor Rockwell systems
- Use fork tool instead of prying, risking damaging the anti-reverse mechanism pin during adjustment
- Spring tension of the mechanism pin will hold the tool in place



## AUTO DIAGNOSTIC VACUUM PUMP/BLEEDER KIT

**W87032**

Inner: 1 Master: 10 Packaging: Clamshell

- Test Ignition timing, chokes, mechanical fuel pumps, and other vacuum actuated accessories
- Complete kit includes accessories for both automotive diagnosis and brake bleeding
- Pumps approximately 1 cubic inch per stroke, and develops and holds up to 25 in. of vacuum Mercury (Hg)







## XL C-FRAME BALL JOINT TOOL

**W89306**

Inner: 1 Master: 2 Packaging: Color Sleeve

- Ideal for removing larger ball joints on press-fit ball joints found in pick-up trucks and SUV's
- Service Toyota Tacoma, Tundra, Chevrolet 2500-3500, Tahoe, Ram 2500-3500, and Ford F350-F551
- Our heavy duty ball joint press is compatible with most other brands of sleeve adapters
- This C-frame can be used in conjunction with our W89304 or W89305 adapters, or other similar brands



## INDEXING OIL SEAL PULLER

**W80753**

Inner: 6 Master: 30 Packaging: Carded

- Use the indexing twin hooks to easily remove oil and grease seals
- Quickly adjusted with a press of the button, hook has 14 different locking positions
- 195 degrees of flexibility make hard-to-reach seals easier to remove allowing you to work efficiently
- Corrosion resistant hook and 12-inch shaft mounted on a double injection comfort grip handle



## BALL JOINT SOCKETS

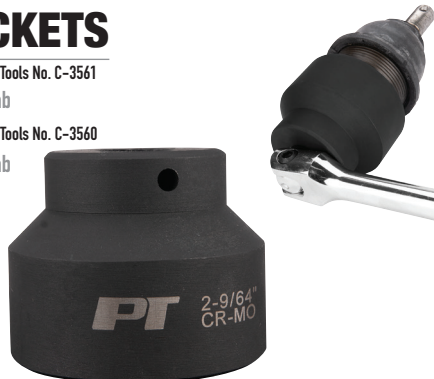
**W83001 - 2-9/64"** • Similar to Miller Tools No. C-3561

Inner: 5 Master: 20 Packaging: Hang Tab

**W83003 - 1-59/64"** • Similar to Miller Tools No. C-3560

Inner: 5 Master: 20 Packaging: Hang Tab

- Removes and installs the screw-in type ball joints used on mid-size, rear-wheel drive Chrysler cars
- Fits ball joints used on Chrysler/Dodge/Ram light trucks and vans
- Machined from high-strength steel for durability and accepts a standard 1/2 in. drive breaker bar



## 4PC LUG NUT REMOVAL SOCKET SET

**M990**

Inner: 6 Master: 36 Packaging: Carded

- Heavy duty impact-grade CrMo steel will not split or crack
- Designed to fit lug nuts that measure 17, 18.5, 21.5 or 26mm from corner to corner or standard equivalent
- Oil resistant black phosphate finish
- 1/2 inch drive
- Use to remove lug nuts & locking lug nuts, if the lug nut key is misplaced, lost or lug nuts are worn, stripped or damaged



## ADJUSTABLE TIE ROD SEPARATOR

**W83050**

Inner: 6 Master: 18 Packaging: Clamshell

- For separating ball joints, tie rods, pitman arms, steering dampers, and shock linkages
- Adjustable to include the following sizes: 11/16 in., 15/16 in., 1-1/8 in., 1-7/16 in., 1-5/8 in., 18mm, 24mm, 30mm, 36mm, and 43mm
- Tough enough to handle any suspension job on most cars and light trucks
- 9 inch long handle with 3 inch long adjustable forks, 12 inch overall length



## CLUTCH HUB SPANNER SOCKET

**W83012**

Inner: 24 Master: 96 Packaging: Carded

- Removes many different four pin lock nuts on Honda powered Motorcycles ATV's and Tractors
- Convenient 20mm and 24mm sizes on one 1/2 in. drive socket
- Heat treated steel construction for dependability and long life
- 20mm removes the Counter Balancer Nut, Clutch Hub Nut, Crank Shaft Nut, and Oil Filter Rotor Nut
- 24mm remove the Oil Filter Rotor Lock Nut, and Clutch Hub Lock Nut

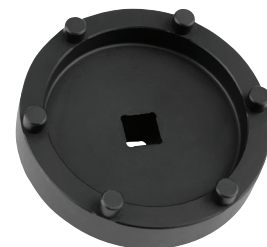


## 6 LUG DODGE AXLE NUT SOCKET

**W83009**

Inner: 6 Master: 36 Packaging: Hang Tab

- For quick and easy removal and installation of 6 slot axle lock nuts
- Use on Dodge/Ram Trucks 1500 - 5500 model years 2006 - 2014
- With Chassis Codes: D2, DC, DD, DH, DJ, DP, DR, DS
- Use with 3/8 in. drive breaker bar, not for impact use
- Same as SPX Miller #8954A



## 11 PC. MASTER LUG NUT SOCKET SET

**M991**

Inner: 1 Master: 12 Packaging: Color Sleeve

- Designed to fit lug nuts that measure 17, 18.5, 20, 21.5, 23, 24.5 or 26mm and 3/4, 13/16, 1 and 1-1/8 inch, diameter, or corner to corner
- Heavy duty impact-grade CrMo steel will not split or crack
- 1/2 inch drive
- Use to remove lug nuts & locking lug nuts, if the lug nut key is misplaced, lost or lug nuts are worn, stripped or damaged



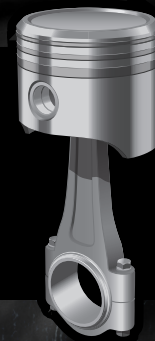
## LOCKING LUG NUT MASTER KEY SET

**M994**

Inner: 1 Master: 5 Packaging: Label

- 16 different key shapes to fit a wide variety of stock and after-market wheel locking lug nuts
- Ensure you have the special key when it's time to change brake pads or rotate the tires
- Double hex-head design allows them to be used with both 13/16 and 7/8 in. lug or combo wrench
- Thin walls and extra-long helps protect the wheel during use to prevent nicks and scratches





## HARMONIC BALANCER PULLER

**W160**

Inner: 5 Master: 20 Packaging: Clamshell

- Fits vehicles with 4 in. hubs, complete with SAE & Metric threaded bolts
- Puller removes balancers, pulleys, and gears
- The floating swivel prevents damage to the shaft end
- Four slots in the yoke allow for 2 or 3-hole applications

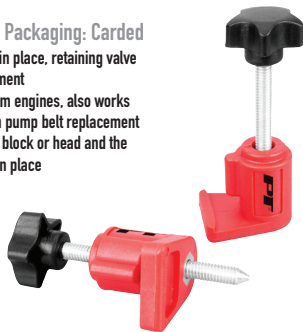


## CAMSHAFT GEAR HOLDING TOOL

**W80400**

Inner: 12 Master: 36 Packaging: Carded

- Use to lock the cam gears in place, retaining valve timing during belt replacement
- For single, dual or quad cam engines, also works well during diesel injection pump belt replacement
- Clamp between the engine block or head and the back of the gear to lock it in place



## EXHAUST TAIL PIPE CUTTER

**W80689**

Inner: 10 Master: 30 Packaging: Carded

- Use to cut exhaust pipes 3/4 in. to 3-3/4 in. diameter
- 15 hardened steel blades for quick, efficient cutting
- Works well in confined hard-to-reach places, needing only a quarter turn to work
- Lubricating cutting wheels before use provides smooth cutting and extends the life of the blades



## 9 PC. MASTER TRIPLE SQUARE BIT SET

**W86024**

Inner: 6 Master: 24 Packaging: Carded

- Nine Piece Triple Square (12 point) Bits to Fit 4, 5, 6, 8, 10, 12, 14, 16 and 18mm Sizes
- Use on Triple Square, or Serrated fastener found on Asian and European vehicles
- Used on head bolts, brake calipers bolts, door handle and hinge fasteners, axle, and flywheel bolts



## FLEXIBLE HOSE CLAMP PLIERS

**W80640**

Inner: 15 Master: 30 Packaging: Carded

- This flexible hose clamp plier allows you to remove metal self-tightening flat type hose clamps
- The pliers' locking mechanism holds clamps in the open position for easier removal
- 24 in. flexible cable allows extended reach
- Removes 11/16-Inch to 2-Inch Self Tightening Hose Clamps



## POWER STEERING PULLEY PULLER

**W87025**

Inner: 6 Master: 24 Packaging: Carded

- Removes one or two groove pressed-on pulleys from alternators and power steering pumps
- Fits pulleys with hub diameters of 1-1/8 Inch, 1-1/4 Inch, 1-5/16 Inch, and 1-3/8 Inch
- Works on Ford, Chrysler, GM, and VW's with Saginaw, Thompson or Fords C111 pumps
- Also removes pulleys on GM vacuum pumps, and pressed on water pump pulleys on GM V6 Engines



## 2 PC. TOYOTA HEAD BOLT BIT SOCKET

**W83184**

Inner: 6 Master: 48 Packaging: Carded

- Designed to reach the deep recessed head bolts on Toyota engines
- 2 pc set includes an 8mm and 10mm triple square bit 140mm (5.51 in.) long
- Extra-long shaft is a must to remove the head bolts on Toyota, Lexus and Scions models
- 1/2 in. CR-V square drive set includes two S2 steel 12-point wrenches
- Use the 8mm on models up to 2006, and the 10mm on models 2007 to current



## QUICK CONNECTOR CLIP TOOL

**W83116**

Inner: 6 Master: 72 Packaging: Carded

- For releasing connections on fuel lines during maintenance or when replacing fuel filters
- Compact palm size design allows you to compress the quick disconnect lugs in tight confined areas
- Widely used on hoses with snap connectors found on, VW, Audi, Mercedes, Fiat, GM, Ford, and others



## A/C & FUEL LINE DISCONNECT SET

**W83101**

Inner: 12 Master: 72 Packaging: Carded

- For Automotive Fuel, AC and Transmission Cooler Lines, on most GM, Ford, Chrysler, and Mazda models
- Disconnect the spring lock couplings simply by pressing the tabs into the opening of the fitting
- Includes the following six sizes: 1/4 (6mm), 5/16 (8mm), 3/8 (9.5mm), 1/2 (13mm), 5/8 (16mm), 3/4 (19mm) and 7/8 inch (22mm)



## 5/16" OFFSET LINE DISCONNECT TOOL

**W83104**

Inner: 10 Master: 240 Packaging: Carded

- 5/16 inch fits Fuel, AC and Transmission Cooler Lines, on most GM, Ford, Chrysler, and Mazda models
- Disconnect the spring lock couplings simply by pressing the tabs into the opening of the fitting
- Works on 5/16 inch quick disconnect couplings on most domestic and import vehicles



## 3/8" OFFSET LINE DISCONNECT TOOL

**W83105**

Inner: 10 Master: 240 Packaging: Carded

- 3/8 inch fits Fuel, AC and Transmission Cooler Lines, on most GM, Ford, Chrysler, and Mazda models
- Disconnect the spring lock couplings simply by pressing the tabs into the opening of the fitting
- Works on 3/8 inch quick disconnect couplings on most domestic and import vehicles

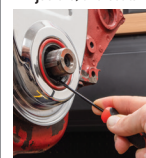


## 6 PC. O-RING AND SEAL REMOVER

**W80752**

Inner: 24 Master: 96 Packaging: Carded

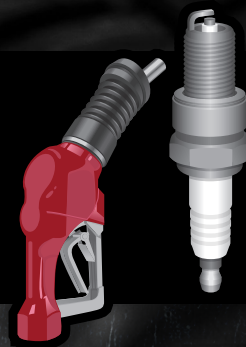
- 6-pieces including 4 spoon tipped seal and O-ring removers and 2 picks: straight and 90 degree
- Seal removal tips are rounded for easy, damage-free removal of seals and O-rings
- Applications include O-rings found on fuel rails, injectors, and seals found on most hydraulics





**PIT<sup>®</sup>**  
Performance Tool

# FUEL & IGNITION



## 3-JAW FUEL TANK LOCK RING TOOL

**W80699**

Inner: 1 Master: 10 Packaging: Color Box

- Remove and install serrated fuel tank retaining rings that hold the pump module inside the tank
- Designed to work on retainer rings with internal and external tabs from 100 to 170mm
- Provides a secure fit without slipping or fall off a wide range of vehicles with in-tank fuel pumps
- Three leg design provides more contact, stability and turning strength compared to the two leg tools
- Use a 19mm (3/4 inch) combination wrench or socket to loosen or tighten the retaining lock ring



## ADJUST SPARK PLUG BOOT PULLER

**W80519**

Inner: 6 Master: 36 Packaging: Carded

- Jaws adjust to five different positions allowing easier access to spark plug boot
- Red vinyl coating on the handles and jaws provides grip of the boot and comfort to your hands
- Cushioned jaws grip the boot straight or from the side
- Use to remove the spark plug boot without pulling off the metal terminal ends of the wires
- In smaller engine compartments it's impossible to get a good grip on the spark plug boot
- The plier style boot puller provides reach and the right angle for the hard-to-reach spark plug boots



**PIT<sup>®</sup>**  
Performance Tool

# AUTOBODY REPAIR



## 4-1/2" ALUMINUM SUCTION CUP/DENT PULLER

**W1030**

Inner: 6 Master: 24 Packaging: Carded

- Easily pops out shallow dents without drilling holes
- Durable aluminum handles and housing, with a natural rubber suction cup
- Wide variety of applications including: Pulling dents, moving smooth flat object, such as the glass, tiles, mirror, floors, and granite
- 110 lb. maximum lifting capacity



## DOOR PANEL REMOVER BENT

**W80644**

Inner: 6 Master: 12 Packaging: Carded

- Easily remove fasteners to release the door panels on most vehicles
- Bent shaft design provides leverage even in tight spaces
- Provides extra prying force
- The square cutout in the tip provides a secure grip, even on fasteners with small tabs
- Ergonomic gripped handle for maximum comfort

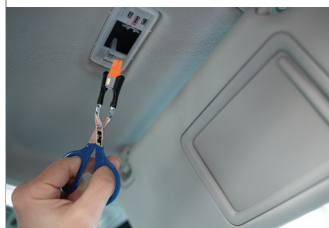


## MINI BULB REMOVER & INSTALLER

**W86563**

Inner: 20 Master: 100 Packaging: Carded

- Use to grip the glass shell of most bulbs gently and firmly eliminating the risk of shattering them
- The cup-shaped grips have a rubber coating for safe and secure handling of fragile bulbs and LEDs
- Minimize the risk of damaging the bulb or fixture when dealing with limited access lighting
- The mini bulb tool is a scissors-like device that's suited for right or left-handed users
- 4-5/8 in. long alloy steel body with cushion finger holes and rubber-coated cup-shaped grips
- For all types of bulbs, and LED lamps including bayonet, screw, wedge base, and heated







# GREASE GUNS & ACCESSORIES

## HIGH VOLUME LEVER ACTION GREASE GUN

**W54296**

Inner: 1 Master: 12 Packaging: Color Box

- Three times the grease output per stroke reduces application time by one third
- Durable cast iron pump head, dual piston design provides high volume long lasting performance
- A dual grease inlet ensures no loss of prime even in extreme cold weather
- Three-way fill with cartridge, bulk or manual capability
- Aluminum die-cast head with air release, and bulk fill valve
- Rigid delivery tube and heavy duty push-on hydraulic 4-jaw coupler
- Develops up to 10,000 psi to deliver 1 oz of grease per 7 strokes

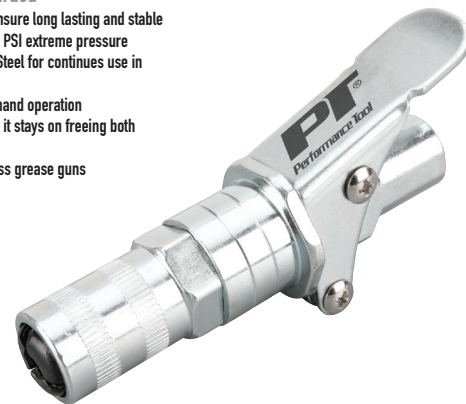


## QUICK RELEASE GREASE COUPLER

**W54238**

Inner: 12 Master: 48 Packaging: Carded

- Reinforced jaws and quality sealing gasket ensure long lasting and stable performance, prevent leakage even at 12,000 PSI extreme pressure
- Built with premium quality Zinc Coated Alloy Steel for continues use in the shop or garage
- A smooth retraction mechanism allows one-hand operation
- Once the coupler is locked on the zerk fitting, it stays on freeing both hands to operate the grease gun
- 1/8 NPT fits all standard, mini, air, and cordless grease guns



## GREASE COUPLER QUICK-LOCK

**W54174**

Inner: 12 Master: 48 Packaging: Clamshell

- Well-designed high-pressure coupler delivers lubrication, forcing it into bearings and joints
- Four hardened spring steel jaws and a high-quality sealing gasket provide a leak-proof connection
- Made of high-quality chrome vanadium steel, strong durable, and rust-resistant
- 2-1/2 in. extended reach works well with recessed and all SAE and Metric Zerk fittings
- 1/8-NPT female thread, 12,000psi capacity, 14mm diameter



## PORTABLE BEARING PACKER

**W54175**

Inner: 1 Master: 18 Packaging: Color Box

- Use to flush out old and repack bearings with fresh grease up to 3.5 inches OD
- No more mess using the palm of your hand to repack the bearing
- Grease stays uncontaminated in the bearing packer, using the dust cover for storage
- Very simple to use, should pack approx. 50 bearings before refilling
- Impact resistant clear body for level and grease type check
- Fully self-contained, saves time and is totally portable so it can be used anywhere



## 100 PC. METRIC GREASE FITTING

**W54239**

Inner: 6 Master: 24 Packaging: Label

- 6mm sizes: 40pcs. Straight, 6pcs. 45 deg., and 6pcs. 90 deg.
- 8mm sizes: 12pcs. Straight, 6pcs. 45 deg., and 6pcs. 90 deg.
- 10mm sizes: 12pcs. Straight, 6pcs. 45 deg., and 6pcs. 90 deg.



## 5-1/2" CURVED GREASE PIPE

**W54297**

Inner: 6 Master: 144 Packaging: Carded

- Use with most hand-operated grease gun couplers
- Used for applications such as lubricating motor vehicles, construction and industrial equipment
- Plated for Maximum Protection against corrosion
- Fits all 1/8" NPT thread grease accessories. 6,000 psi operating pressure



## SPILL PROOF COOLANT FUNNEL KIT

**W89740**

Inner: 1 Master: 12 Packaging: Color Box

- Easily used to properly refill automotive cooling systems without the chance of spilling
- Eliminates trapped air pockets which causes erratic cooling system and heater performance
- Better control when adding coolant preventing overflow onto belts and other engine components
- Includes threaded cap adapters for newer GM and Ford threaded style radiator openings
- Contents: 5-inch straight extension, two 2 1/4-inch 45 degree elbows, 5 cap adapters, 4 caps, stopper, funnel, and lid
- Use the 45 degree elbows to access caps under shrouds or at an angle



## SMALL ENGINE OIL CHANGE KIT

**W4075**

Inner: 1 Master: 20 Packaging: Color Box

- Extract used oil from small 4 stroke engines including mowers, weed whackers, blowers, and more
- Oil suction syringe extracts used oil through the enclosed 12 inch clear suction hose
- Empty the used oil into the temporary oil container for simple and hassle free oil changes
- Enclosed funnel is the perfect size to fit small oil fill ports on most 4 stroke equipment
- Microfiber towel traps dirt and grime, keeping the oil fill port clean



## STANDARD & WIDE MOUTH GALLON

**W1140**

Inner: 6 Master: 48 Packaging: Clamshell

- Unique double threaded cap fits both gallon size containers, standard (37mm) and wide mouth (50mm)
- Threads securely onto traditional 37mm and the new 50mm wide mouth gallon containers
- The inlet plastic hose cut to fit to ensure you reach the bottom of your container
- Includes a 17 inch long, 3/8 inch diameter discharge hose allowing easy access to reach fill plugs



## SIPHON HOSE W/BACK FLOW VALVE

**W54159**

Inner: 6 Master: 24 Packaging: Carded

- Safely transfer most liquids from one container to another with ease
- Back flow valve prevents unwanted reverse flow of any liquid
- Siphon pump allows quick and easy transfer of gasoline, water and most other liquids
- The rubber squeeze pump and one way valve generates quick suction to start the siphon
- Two 32 in. oil and gas resistant hoses give you plenty of reach for deep containers



## 2.8 QT LOW PROFILE OIL DRAIN PAN

**W4073**

Inner: 1 Master: 20 Packaging: Label

- Low profile tapered end prevents spills when draining oil from lawn equipment and motorcycles
- The narrow end fits nicely against the engine just under the drain plug of most small engines
- Curved with splash guard lip to protect from splashing and spilling
- Made of heavy duty, chemical resistant plastic
- Capacity: 2.8 qts. (2.64L)
- Dimensions: 15.9 in. (40.38cm) x 8.5 in. (21.59cm) x 2.68 in. (6.81cm)
- Works well for motorcycles up to 1000cc





# PT<sup>®</sup> OIL CHANGE Performance Tool

## ANGLED SELF-ADJUSTING FILTER PLIERS

**W54315**

Inner: 6 Master: 36 Packaging: Carded

- 30° Offset angled jaws allow for more clearance when loosening a filter
- Self-adjusting spring tension automatically adjusts to the proper size
- Wide jaw design offers a wide range capacity from 2-5 inches (51-127mm)
- Heavy-duty riveted layered steel construction with comfortable molded grips
- Thin profile allows access into confined spaces



## PLASTIC OIL DRAIN PLUG REMOVER

**W54298**

Inner: 10 Master: 60 Packaging: Carded

- Use to remove the plastic oil drain plugs on Ford, VW, Audi and BMW that have a plastic oil pan
- The special shapes on the adapter, securely fit specialized vehicle drain plugs without causing damage
- Textured plastic handle provides maximum rotational torque to remove and replace the plugs
- Chrome plated steel 3/8 in. drive T-handle, with three black oxide steel 3/8 in. drive adapters
- Adapters can fit the T-handle or any hand operated 3/8-inch ratchet



VW MODELS - Beetle, Eos, Golf, GTI, Jetta, Passat, Scirocco and Tiguan. AUDI MODELS - A3, A4, A5, A6, Q3, Q5, S3, TT, and TTS. FORD MODELS - Using 2.7L, 3.0L, 3.3L, 3.5L, 5.0L engines. BMW 125i, 220i, 225i, 228i, 320i, 328i, 420i, 428i, 520i, 528i, X1, X3, X4, and Z4.

## 12" ALUMINUM STRAP WRENCH

**W2150**

Inner: 1 Master: 25 Packaging: Carded

- 12 inch super strong lightweight aluminum I-beam handle
- Double thick 2-ply woven nylon strap that grips tightly without damaging or scratching the surface
- Use on any polished, plastic or cast iron pipe up to 9 inches
- Works great in tight places on fittings, filters, and irregular shaped items
- Strap width: 1.05-Inches - Strap length: 34-Inches - Overall length: 12-Inches



## 2-IN-1 DRAIN PAN TOOL CADDY

**W4074**

Inner: 1 Master: 1 Packaging: Color Box

- Oil drain pan and mobile tool caddy, two tools in one
- Use together when changing oil, or separately keeping your tools organized while under the car
- Unique splash guard and oil filter drain post on an 8 liter drain pan, perfect for any shop
- Three 2 in. locking swivel casters hold the caddy and pan in place when draining oil
- Made from high-impact polypropylene, lightweight for easy movement, durable for long-term use
- Oil drain pan is designed to cradle into the tool caddy making the pan mobile, easy to position
- 18-1/2 in. wide hexagon shape, 5-3/8 in. tall



Tools not included.

# PT<sup>®</sup> SHOP EQUIPMENT

*Performance Tool*

## ROLLING STORAGE GARAGE SEAT

**W85035**

Inner: 1 Master: 1 Packaging: Brown/White Box

- Injection molded body reinforced with rectangular steel supports extending beyond the seat to provide maximum strength and stability
- Two large integrated side storage trays, oversized removable storage drawer, and three removable side trays
- Includes two moveable trays that can go in any of the six slots on all three sides of the cart
- Oversized 19-inch seat features vinyl foam cushion for added comfort allowing to get more done
- 300 lb. (137 Kg) Weight capacity



## 36" 6-CASTER CREEPER

**W85015**

Inner: 1 Master: 1 Packaging: Brown/White Box

- Six shielded 2-1/2" (63.5mm) swivel casters allow easy 360° movement and added stability
- Low profile design provides improved clearance
- Powder coated heavy-duty tubular steel frame
- Fully padded deck with cushion headrest
- Max 350lbs capacity (160Kg)
- Use replacement caster assembly Performance Tool model W85003



## 2 TON SUV SCISSOR JACK

**W1622**

Inner: 1 Master: 6 Packaging: Color Box

- Sturdy steel construction with a 4,000 lb. load capacity
- Includes a ratchet wrench for tight spaces and the standard speed wrench
- Lifting range is 3.9 in. to 17.3 in. (9.9cm to 43.9cm), perfect for the taller Sport Utility Vehicles
- 15 in. x 4.75 in. (38.1cm x 12.1cm), oversized base for added stability and support
- Precision acme threaded shaft for strength and long service life



## 2 PC. MAGNETIC TOOL HOLDER BAR

**W12526**

Inner: 1 Master: 36 Packaging: Poly Bag

- Features strong double sided magnets so the bar will stick to most any steel surface
- Industrial looking carbon fiber textured finish will not scratch and can easily be relocated
- Length of the bar is flexible enough to contour onto a rounded surface



## PNEUMATIC ROLLING SHOP STOOL

**W85033**

Inner: 1 Master: 4 Packaging: Color Box

- Pneumatic action adjusts seat height from 19 to 24 inches (480 to 610mm) quickly and easily
- Extra-wide powder coated 5-point frame and foot rest with durable crinkle finish
- Five hooded dual-caster swivel wheels for easy maneuverability
- Extra-thick 12.5 inch (318mm) diameter foam padded seat
- 300lb capacity (136 Kg)



## HIGH TOP ADJUSTABLE CREEPER

**W85038**

Inner: 1 Master: 1 Packaging: Label

- Helps the tech increase productivity safely working from the topside of the engine compartment
- An over the engine workstation with an 18 x 12 inch, (45.7 x 30.5cm), padded deck
- Provides added comfort to the tech, while working on raised vehicles for a longer period of time
- Adjustable creeper height 45 to 66 inches, (114.3 x 167.6cm)



## 3 TON RAPID LIFT LOW PROFILE FLOOR JACK

**W1626**

Inner: 1 Master: 1 Packaging: Color Box

- Dual piston rapid lift, raises most vehicles with just 3-1/2 pumps
- Precision-welded steel construction, with powder coat finish, and rust-resistant hardware
- Removable saddle, adapts quickly to other lifting accessories
- Modern design is ideal for the extra-low profile vehicles
- Lift capacity of up to 6000 lb., and a lift range of 3-1/4 in. to 20 in



## FENDER BUDDY FLEXIBLE TRAY

**W1294**

Inner: 1 Master: 6 Packaging: Color Box

- Four small molded pockets for nuts and bolts
- Tray also has molded holes for drill bits, hex keys, or screwdriver bits
- Install that new car stereo, set the tray with necessities on the dash knowing its not sliding off
- Flexible tray can hold the wire, crimping tool, and the terminal connectors needed for the project

